

Clamping elements

for adjustable spindles

SPECIFICATION

Types

- Type **H**: Clamping screw with adjustable handle
- Type **S**: Clamping screw with internal hexagon

Aluminium
anodized black **ELS**

Wedge

Brass

Adjustable hand levers

- black, RAL 9005, textured finish
- with setting screw, Stainless Steel AISI 303

Setting screw with internal hexagon

Stainless Steel AISI 303

INFORMATION

Clamping elements GN 826 are normally used in connection with control knobs and smaller handwheels.

Spindles can so be clamped gently and easily and without much construction and installation effort. The clamping wedge stiffens the spindle, e.g., to prevent maladjustments caused by vibrations or to secure the spindle after adjustment.

This clamping element can also be used to store the spindle.

The clamping element may be mounted such that the clamping lever / the clamping screw is positioned either on the left or the right hand side.

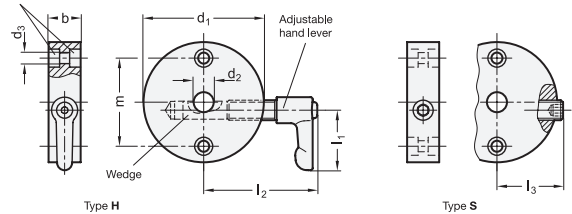
Indicator arrows which can be attached to the circumference of the clamping element are found under GN 711.1. (see page 640)

TECHNICAL INFORMATION

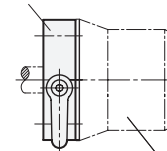
- ISO-Fundamental tolerances (see page A21)
- Stainless Steel characteristics (see page A26)



2 Bores for socket head cap screws
DN 912-M4 / M5



Clamping element



Adjustable knob

GN 826

Description	d1	d2 H7	d3	b	m	l1	l2 max.	l3 max.	Δ
GN 826-40-B8-H-ELS	40	B 8	4.3	16	28	30	50	-	80
GN 826-40-B10-H-ELS	40	B 10	4.3	16	28	30	50	-	79
GN 826-50-B8-H-ELS	50	B 8	5.3	16	36	30	56	-	110
GN 826-50-B10-H-ELS	50	B 10	5.3	16	36	30	56	-	110
GN 826-50-B12-H-ELS	50	B 12	5.3	16	36	30	56	-	109
GN 826-60-B10-H-ELS	60	B 10	5.3	16	44	30	61	-	148
GN 826-60-B12-H-ELS	60	B 12	5.3	16	44	30	61	-	147
GN 826-40-B8-S-ELS	40	B 8	4.3	16	28	-	-	27	54
GN 826-40-B10-S-ELS	40	B 10	4.3	16	28	-	-	27	54
GN 826-50-B8-S-ELS	50	B 8	5.3	16	36	-	-	32	84
GN 826-50-B10-S-ELS	50	B 10	5.3	16	36	-	-	32	84
GN 826-50-B12-S-ELS	50	B 12	5.3	16	36	-	-	32	83
GN 826-60-B10-S-ELS	60	B 10	5.3	16	44	-	-	36	122
GN 826-60-B12-S-ELS	60	B 12	5.3	16	44	-	-	36	122